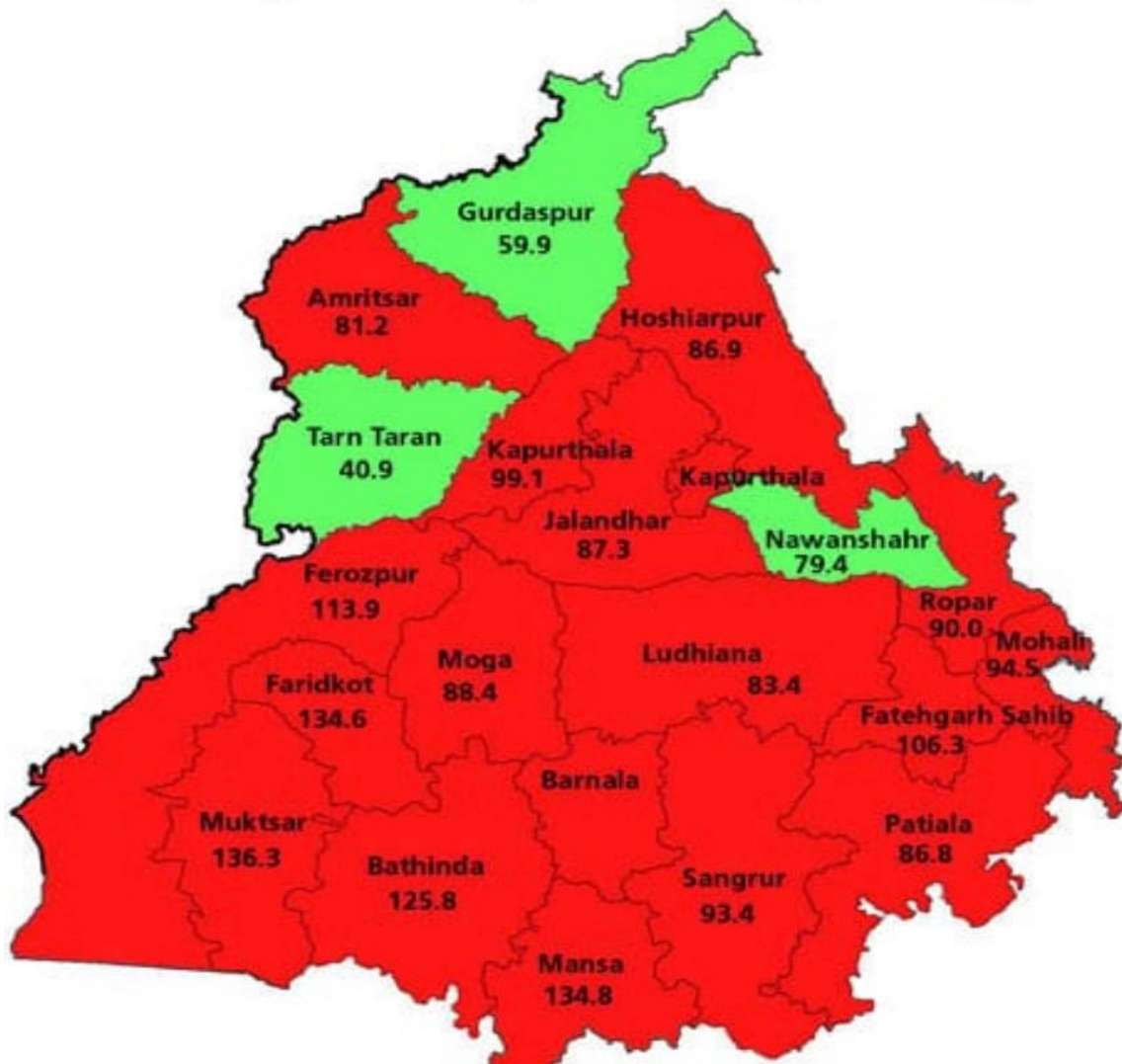


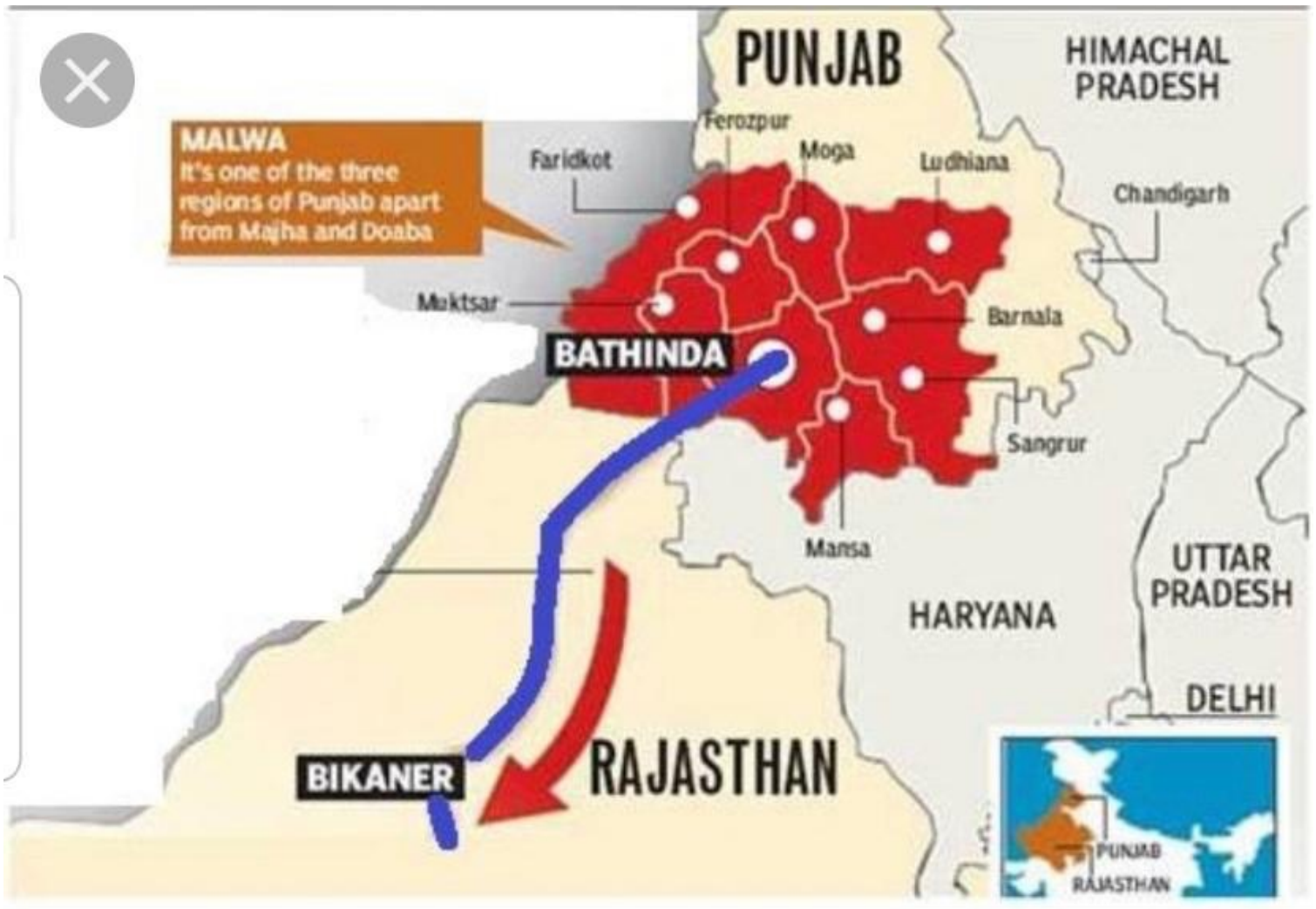
Cancer Care & Detection Campaign

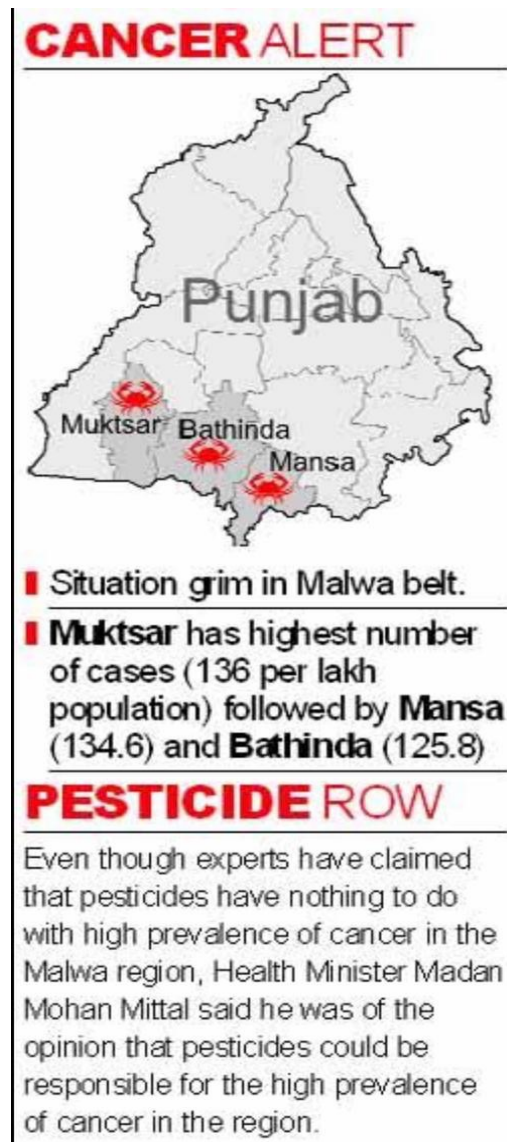
THE RESULT OF EXCESSIVE USE OF CHEMICAL FERTILISERS & CHEMICAL PESTICIDES CONTAMINATING GROUND WATER RESULT-ED IN SPREAD OF CANCER IN PUNJAB

Cancer prevalence (per 100,000 population)



A state which led India in 1970's as the pillar of Indian Food basket as of now leads officially Internationally as the "Cancer Belt in India"- what more else is more dangerous than each loved one affecting from this & dying in multiples each year — Not only its about Punjab the same poison is spreading everywhere in India & Internationally.

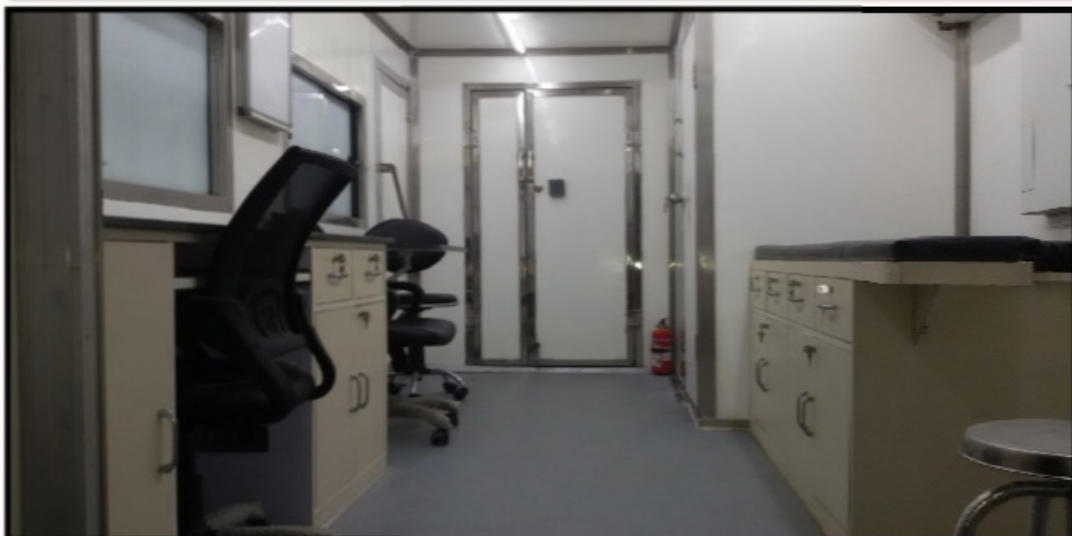




We would undertake various initiatives to check these issues such as:
*Organise Cancer Detection Camps across villages, districts , slums, RWAs , Industries , Corporates , Institutions etc in order to do primary investigation so as to access whether the individual is suffering from any for cancer ,

if yes then which one & what stage it is or is prone to so that for further detailed investigation and treatment can be taken up.

*To reduce the barrier of accessibility, ‘Mobile Cancer Detection Units’ have been created which would our neighbourhood-based camps and diagnostic vans that provide free screening to address time and financial resource constraints.



23	Aluminum Ladder 6ft	In House	1
----	---------------------	----------	---

Revised Commercial Details of Mobile Cancer Detection Van			
S No	List of Equipment	Brand/Make	Qty
1	Mammography Machine	Allengers	1
2	CR with Printer	Konica	1
3	UPS	Online 3 KVA	1
4	Computer and laser printer	Dell/HP	1
5	Doctor's Chair	Godrej	1
6.	Wash basin (with soap dispenser ,tissue paper holder , towel ring & hand sanitizer)	In House	1
7	Air Conditioner installation and stabilizer	V Guard	2
8	AC & DC electrical connection inside the vehicle	Havels	1
9	Fabrication (PUF Panel) with GRP German skin	In House	1
10	Co-Driver seat, seats for Staff in driver cabin and also one sleeping facility for driver	In House	1
11	Weighing Machine Adult	Omron	1
12	Stools for attendant and Patients	S S top	3
13	Needle and Sharp Destroyer	ISI Standard	1
14	Fire Extinguisher For Driver Cabin 400 Gm	ISI Standard	2
15	Air Conditioner, 1.5 Ton Split	Voltas/ Whirlpool	2
16	Generator	Honda EU 70is	2
17	Generator fitment with rail arrangement	In House	2
18	PA System	Grand	1
19	Focus Light	ISI Standard	1
20	Emergency Light	ISI Standard	2
21	Clinical digital thermometer	Dr.Morepan	2
22	15 Mtrs Wire loom for external AC supply	Finolex	1



*To develop & run dedicated Media Campaigns to make the general public aware of the key critical issues of drug abuse.

*Setup a dedicated team for online & a helpline number for counselling, awareness and assistance for general public/NRIs who through these mediums can connect with us and our counsellors can consult them on the key issues to handle this.

Those who would like to contribute to the cause by providing their expert, technical knowledge or financial assistance to undertake such camps or to assist in buying of these Cancer Detection Mobile Medical Units / Vans are welcome to come forward and participate.

Further in case you would like to us to conduct cancer detection camp in your villages, districts, slums, RWAs, Industries, Corporates, Institutions etc you can register for the same.

In order to register and share your need, you can log on to the website, register yourself and then submit an application for the assistance you need and then our counselling team will get back to you on the same. A dedicated team and a helpline number too to seek assistance Internationally is placed for the same.